



MATERIALS





The Armani/Casa collection includes many finishes developed exclusively for the brand, born from the reinterpretation of traditional techniques as well as from the infinite possibilities offered by modern technologies.

The range of materials comprises stones, woods, metals, leathers and many handmade precious finishes which require skillful artisans to be completed.

MAPLE

Our maple features veneer coming from plants belonging to the *Acer* genus. The typical narrow streaks of this wood are emphasized by the finish: a glossy surface enriches the black option featured in our collection. Area of origin: Europe.



BLACK MAPLE

OAK

Oak (*Quercus petraea*) is probably the most popular essence for furniture. Both oak versions in our collection are matt and covered by a layer of transparent protective paint. Area of origin: Europe



BRUSHED BROWN OAK



BRUSHED GREIGE OAK

ASHWOOD

Ashwood (*Fraxinus spp.*) is marked by clearly visible streaks, which create an exceptional visual impact. Ashwood plays around strong three-dimensional effects: a heavy brushing phase gives the surface a typical irregular appearance that highlights the natural veins of the material. The wood is finally covered with a protective layer of transparent matt dye. Area of origin: Europe



BRUSHED BLACK
ASHWOOD



BRUSHED HONEY
ASHWOOD



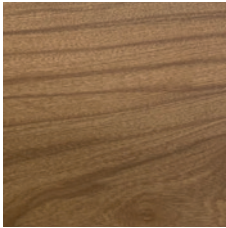
CANALETTO WALNUT

WALNUT

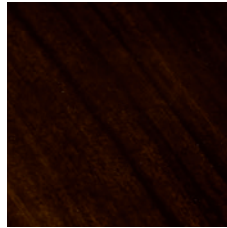
Walnut is present within our collection in its American version (*Juglans nigra*): the name "canaletto" comes from Italian and it is due to the tiny canals visible into the wooden texture, which transport sap inside the plant. Area of origin: North America.



GREIGE TULIPIER



OLIVE



SHINY SANTOS
ROSEWOOD

CLASSIC AND EXOTIC ESSENCES

The Armani/Casa collection is rich in many woods varying in colour, texture and origin.

Olive - an uncommon essence in home environments - underlines the deep bond of our brand to the Mediterranean. The collection also includes exotic woods such as shiny rosewood from South America (*Machaerium scleroxylon*).

All essences do not need any CITES documentation, since they do not come from endangered species: this is an ethic choice that Armani/Casa pursues in order to fulfill the Corporate Social Responsibility of the Armani Group.



TEAK



WEAVED TEXTURED TEAK

TEAK

Teak is a naturally weather resistant wood suitable for outdoor environments. Weaved Textured Teak is marked by a three-dimensional carving reminding the weave of fabrics. Area of origin: Asia.

METALS

Always aiming to create the best chromatic harmony, Armani/Casa offers several colours of metals to perfectly match all other finishes in collection. Golden tones, in particular, are typical within the Armani/Casa palette. Each metal is characterized by a different treatment of the surface (satin or glossy) and shows a modern or a vintage look. Satin Light Brass is entirely hand polished to obtain its typical appearance.



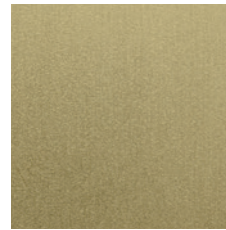
BRONZED BRASS



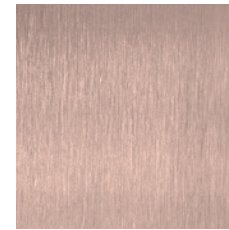
GLOSSY NATURAL BRASS



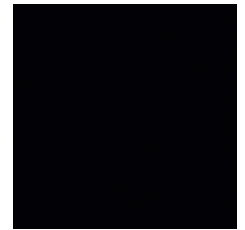
SATIN LIGHT BRASS



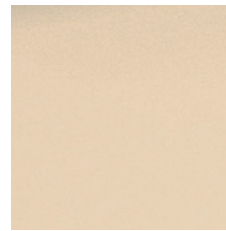
SATIN NATURAL BRASS



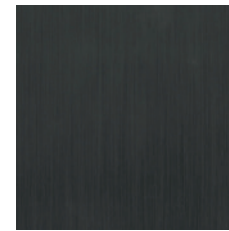
SATIN ROSE BRASS



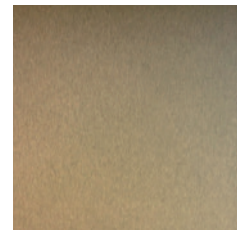
BLACK PAINTED STEEL



CHAMPAGNE METAL



SATIN BLACK NICKEL



SMOKED GOLD

SPECIAL METALS

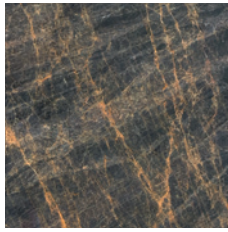
The use of metal - and other exclusive finishes imitating this material - is a signature element of Armani/Casa. Onyx-Textured Metal combines metal with another element typical of our brand, onyx, Giorgio Armani's favorite stone because of its tone-on-tone striped design. An advanced ink printing technology is used to replicate the onyx pattern: in this way, the design "penetrates" the metallic surface so that it can become more vivid and resistant.



ONYX-TEXTURED METAL



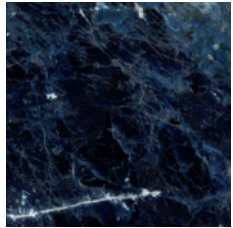
ONYX



GREY COLOMBIAN MARBLE



SELENITE



SODALITE



TAJ MAHAL QUARTZITE



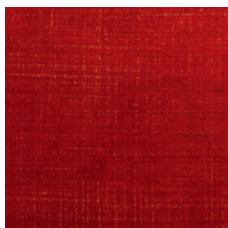
MARINE PEN SHELL



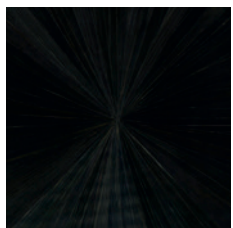
SHELL MOSAIC



KYOTO TEXTURE



LACQUERED RED LINEN



BLACK STRAW
MARQUETRY



BRONZE STRAW
MARQUETRY

STONES

Stones are a very important element in the Armani/Casa aesthetic philosophy, since they are the ultimate expression of Nature's beauty and eternity. Armani/Casa uses the most astonishing stones in the world for its collections, selecting every slab individually to find the best possible hue and design. Examples of this research are Taj Mahal Quartzite from Brazil, Grey Marble from Colombia, Selenite from Morocco and Sodalite from Bolivia.

SHELLS

Shells are the perfect example of how Armani/Casa can transform the beauty of Nature into astonishing finishes. Marine Pen Shell is made in Indonesia, where skillful artisans treat pen shells to obtain an alternating black/grey striped design. Shell Mosaic features a rich texture given by the pearlescent surface of mother-of-pearl tiles, assembled together to create a mosaic playing with squared and rectangular shapes.

LINEN

The Armani/Casa collection includes decorative finishes inspired by the naturalness of linen.

Kyoto Texture is made with real linen fabric in natural colour featuring dark red lacquered inserts.

Lacquered Red Linen features linen fabric coupled with gold leaf and then painted in red, where a layer of transparent lacquer adds the final shiny touch leaving the textured surface visible.

STRAW MARQUETRY

This finish has become an Armani/Casa signature through the years. The origins of this technique are ancient: first traces of straw marquetry can be found in Far East countries and date back to the Middle Age. Only after the late XVII century this decoration spread in central Europe, especially in France. The process to obtain this finish is handmade and requires several steps in which the skill of the artisan is crucial: from the cutting of rye straws to their flattening, from their glueing to the final polishing, everything must be carefully done to obtain the typical look of this precious material.

GLASSES

The Armani/Casa collection includes a range of exquisite Murano glass, made following the ancient techniques of Murano glassmaking. The appearance of these creations is marked by streaks and veins in different tones, layered in the thickness of the glass in order to create a sense of major depth and imitating the look of stones. The silky touch of the surface is due to the final polishing phase.

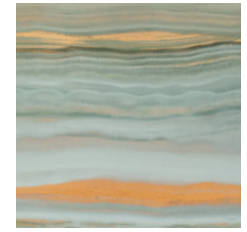
Orsini Glass is a breath-taking finish inspired by the Neoclassic architectural details of Palazzo Orsini, like the water green walls and golden stuccos. This finish is obtained by hand painting the back of a tempered extra-clear glass with a special paint mixing different pastel tones, using a large soft brush. The application of the paint is uneven, hence leaving some areas more transparent than others; the addition of real gold leaf adds a further touch of preciousity and layers of depth. The final passage is a protective painting, in order to fix and protect the finish while making the surface completely smooth.



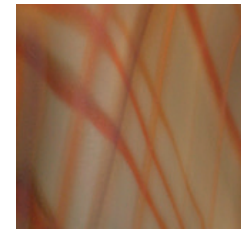
BLACK
GLASS



DOVE GREY MURANO
GLASS



ORSINI
GLASS



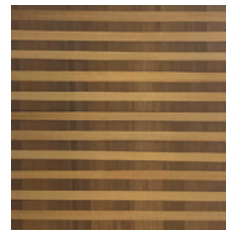
SUNSET MURANO
GLASS

NATURAL MATERIALS

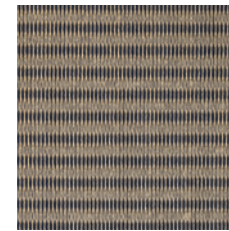
Crisscross Natural Straw is obtained using a base panel covered by vertical rye straws, contrasting with the horizontal ones glued to leave the background visible. The alternance of vertical and horizontal stripes affects the way light hits the surface, giving back several tones of gold and brown that change depending on the angle of view. The finish is covered by a layer of matt transparent paint to make the surface smooth and more resistant. Like marquetry, this finish requires many hours to be completed: the straws are carefully glued one by one to create the intricate pattern.

Natural-Black Tatami is a textured material obtained by weaving paper yarns around a core of resistant cotton strings. The tatami-inspired surface is marked by a three-dimensional motif, recalling a *canneté* effect thanks to the two contrasting colours: these features create a strong link to the world of fashion and Japanese culture at the same time.

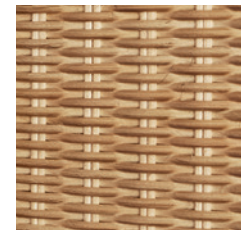
Hazelnut Midollino, with its woven detailing, features a three-dimensional texture obtained through the traditional artisanal technique of wicker.



CRISSCROSS NATURAL
STRAW



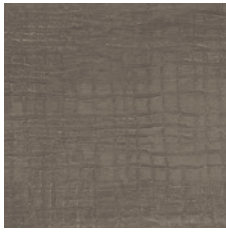
NATURAL-BLACK TATAMI



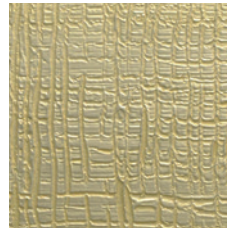
HAZELNUT MIDOLLINO



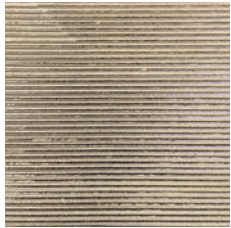
BLACK DRAFTED
STUCCO



MUD DRAFTED
STUCCO



WHITE GOLD DRAFTED
STUCCO



WHITE GOLD STRIPED
STUCCO



BRUSHED SILVER LEAF



PATINATED SILVER LEAF



WHITE GOLD LEAF

STUCCO

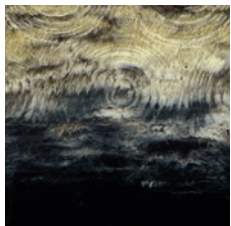
This typical wall decoration technique has been reinterpreted by Armani/Casa with the creation of these precious finishes. The drafted versions, available in four colours, are obtained by creating an irregular grid on wet stucco; once dry, the surface is finished with a protective layer of glossy lacquer.

White Gold Striped Stucco, instead, is the result of the combination of three different elements: a carved wood panel featuring a striped design reminding the *canneté* texture of fabrics, a layer of natural stucco and a final application of silver leaf.

GOLD AND SILVER LEAF

The art of gilding is very ancient: Egyptians used to gild wood and metals, and also Greeks knew a similar technique. The extensive use of gilding spread especially during the Roman Republic period and continued for all the following centuries, becoming a typical decoration for jewelry, statues, picture frames, paper art, small objects, architectural details and luxury furniture. The gilding of Armani/Casa furniture is a completely handmade process, which is carried out thanks to the skill of artisans applying the thin metal sheets (0,2 micron thickness) on wood with the aid of a brush and a wet sponge only.

Gold leaves are made with real 12-karat gold and are available in two tones, from a very pale and delicate white gold to a more vintage tone; silver leaf, is presented in a romantic rosé version enriched by a touch of copper.



MOONLIGHT
DECORATION

DECORATIVE RESINS

Ivory and black, two sides of the same elegance envisaged by Giorgio Armani. The neutral tones of the first blend in the velvety essence of the second, creating a stunning three-dimensional finish for Armani/Casa. Inspired by the delicate brightness of the moon and its reflections on water and clouds, the Moonlight Decoration enchants with its *dégradé* effect, as well as with the uneven appearance: circles, carved in the resin to imitate the concentric ripples created by drops, add movement to the surface resembling water mirroring the night sky.

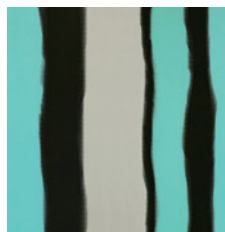
HANDMADE / HAND PAINTED LACQUERS

These finishes represent the highest level of artisanship and are deeply linked to art.

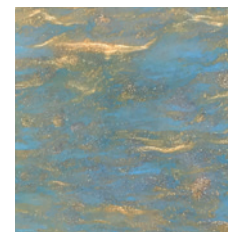
Caribbean Lacquer is obtained by applying three layers of different colours on the same surface: the paint is later removed in specific areas in order to show the contrasting hues underneath, creating irregular stripes with blurred borders. The whole process is handmade.

Golden Sea Waves Lacquer, instead, presents golden hand painted streaks on a shellac ground, recreating a play of reflections on water half way between the softness of Impressionism and the luster of Art Déco.

Sky Lacquer is entirely hand painted and reinterprets the hues of the *Cloud Studies* that the English painter J. Constable (1776-1837) painted as a tribute to his homeland.



CARRIBEAN
LACQUER



GOLDEN SEA WAVES
LACQUER



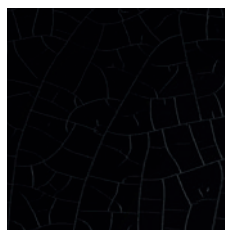
SKY
LACQUER

OTHER LACQUERS

Many of the lacquers by Armani/Casa show a distinctive look, given by the texture or the metallic shine of the surface.

Platinum Waves Lacquer presents a design of wavy lines, visually recalling an irregular canneté. The effect is obtained thanks to the most superficial veneer, whose increspated surface adds movement to the whole finish. The final touch is the addition of a platinum lacquer, enriched by a very light rose hue.

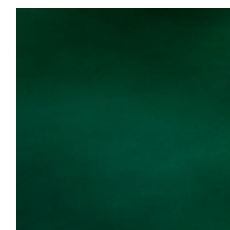
Watoji Lacquer is a black lacquer marked by the presence of inlays in Satin Light Brass, whose design is inspired by the traditional Japanese technique of bookbinding



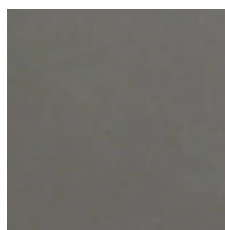
BLACK CRACKLED
LACQUER



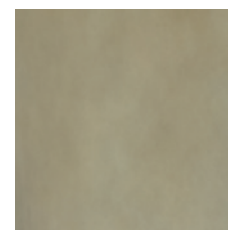
JAPAN RED
LACQUER



JUNGLE
LACQUER



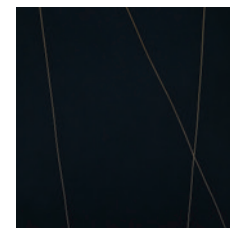
METAL
LACQUER



PLATINUM
LACQUER



PLATINUM WAVES
LACQUER



WATOJI
LACQUER



BLUE TUAREG
LIQUID METAL



BRASS CARVED
LIQUID METAL



PATINATED
LIQUID METAL

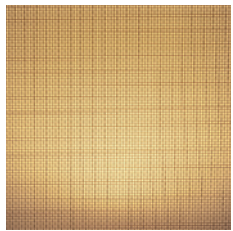


TATAMI
LIQUID METAL

LIQUID METALS

Liquid metals are a new generation of lacquers featuring real metal pigments, which give the finishes a distinctive look: in fact, all these materials present a typical reflectance and a cold touch resembling the one of real metal. Depending on the support – carved, brushed or perfectly even – and the desired hue, it is possible to obtain different effects. On ash, for example, it is possible to appreciate the natural veins of wood below the silver lacquer, while the carved versions create the illusion of vintage metal rods.

A rich tone of blue, marked by a particular visual depth and inspired by the traditional turbans of tuaregs is the main feature of the Blue Tuareg Liquid Metal. A first layer of silver liquid metal is applied on the surface, which is then hand brushed and finally covered with a layer of blue lacquer.



GOLDEN
METHACRYLATE



GOLDEN CANNETÉ
METHACRYLATE



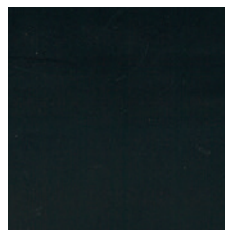
TRANSPARENT
METHACRYLATE

METHACRYLATE

Methacrylate is a high-performing material with unique characteristics: more transparent than glass and very resistant, it can be used to obtain particular effects. The Armani/Casa collection features different versions of this material coupled with metal mesh, where the final colour depends both on the hue of the metal itself and the colour of methacrylate layers enclosing the mesh.

LEATHERS (CUOIO)

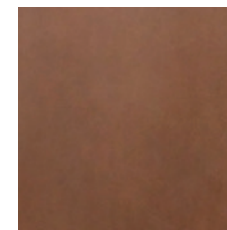
'Cuoio' is the thick leather of the Italian tradition, typical of central regions such as Tuscany. Due to its thickness, this cow leather is available only on some products like some chairs and desks. The surface of cuoio is quite smooth and homogeneous.



BLACK
LEATHER (CUOIO)



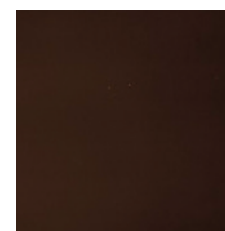
COGNAC
LEATHER (CUOIO)



CORTECCIA BROWN
LEATHER (CUOIO)



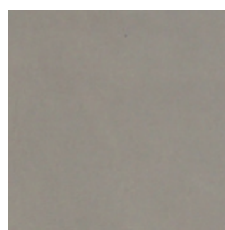
DARK BLUE
LEATHER (CUOIO)



DARK BROWN
LEATHER (CUOIO)



DARK GREEN
LEATHER (CUOIO)



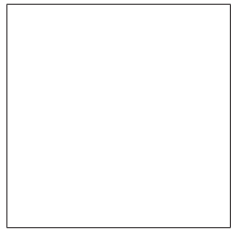
DOVE GREY
LEATHER (CUOIO)



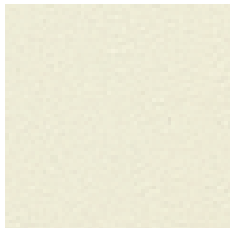
NATURAL
LEATHER (CUOIO)



RED
LEATHER (CUOIO)



ICE
SOFT TOUCH LEATHER



IVORY
SOFT TOUCH LEATHER



SAND
SOFT TOUCH LEATHER



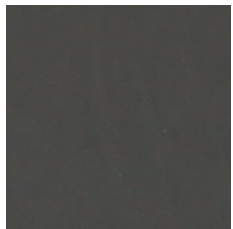
LIGHT BROWN
SOFT TOUCH LEATHER



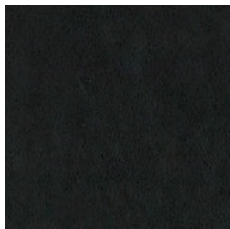
DOVE
SOFT TOUCH LEATHER



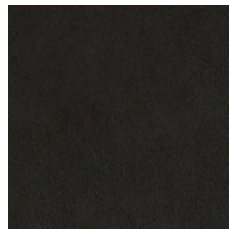
BROWN
SOFT TOUCH LEATHER



GREEN
SOFT TOUCH LEATHER



BLACK
SOFT TOUCH LEATHER



CHARCOAL
SOFT TOUCH LEATHER

SOFT TOUCH LEATHERS

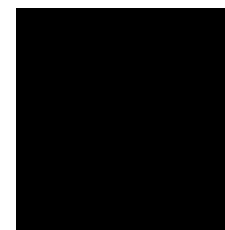
Soft Touch Leathers are tumbled cow leathers, showing a distinctive texture. Available in neutral colours, this kind of leather is suitable for upholstered products. Area of origin: Italy.

THIN LEATHERS

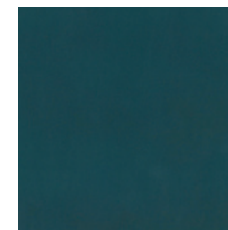
Thin Leathers present a reduced thickness compared to Soft Touch Leathers. They are treated cow leathers featuring a smooth surface, where irregular streaks can be visible: this distinctive feature is typical of the natural raw material and highlights its quality. Thin Leathers are available on a selection of products only. Area of origin: Italy.



NATURAL
THIN LEATHER



BLACK
THIN LEATHER



BLUE
THIN LEATHER



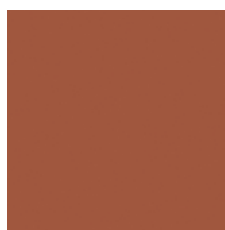
ORANGE
THIN LEATHER



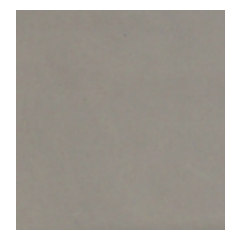
RED
THIN LEATHER



DARK GREEN
THIN LEATHER



COGNAC
THIN LEATHER



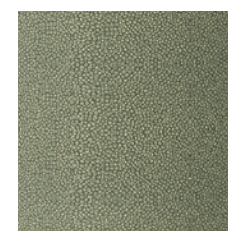
DOVE GREY
THIN LEATHER



WATER GREEN
THIN LEATHER

SHAGREEN-INSPIRED LEATHERS

Jade Shagreen textured leather is crafted through a printing technique followed by hand-brushing, which lightens the colour in relief. Colour and shade can vary from one leather to another.



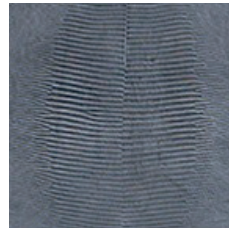
JADE SHAGREEN
TEXTURED LEATHER



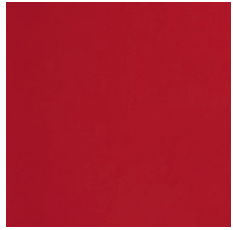
BEIGE VINTAGE
LEATHER



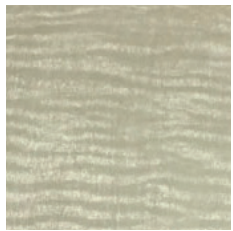
BROWN VINTAGE
LEATHER



GREY LIZARD EFFECT
LEATHER



JAPAN RED
SOFT TOUCH LEATHER



TECHNICAL CHINCHILLA
FABRIC



TECHNICAL PEARL GOLD
FABRIC



TECHNICAL SHAGREEN
FABRIC

OTHER LEATHERS

Some leathers are developed as exclusive materials for specific products. Vintage Beige and Vintage Brown Leather are respectively available on the Paul and Pascal ranges only, and both are marked by irregularities on the surface due to the preciosity of the material.

TECHNICAL FABRICS

Technical fabrics by Armani/Casa are developed on microfiber, which makes them soft and pliable. These materials are stronger than leather on a strength-to-weight ratio but, similarly to leather, their surface features invisible micro pores that can dissipate heat and humidity. Differently from usual fabrics of this kind, they do not contain any PVC: for this reason, they do not release any harmful compounds, thus being safe for use in any environment. Those fabrics are also very resistant to abrasion and provide excellent durability; they even passed the flame retardant test (FR) without any additional treatment.

Depending on the desired effect, these fabrics can undergo different processes to obtain a specific look: Technical Shagreen Fabric, for example, has a custom printed multi-coloured pattern created by a tri-axial matrix, conceived to remind the appearance of the precious rawhide typical of the Armani taste. The other versions of technical fabric reproduce the typical streaks on the fur of chinchilla (Technical Chinchilla Fabric) or a warm-toned leather with pearlescent reflections (Technical Pearl Gold Fabric).