

2025 Materials and Finishes



domkapa



INDEX

Soft Materials 3

Threads, Stitches & Cords 24

Hard Materials 26



Sand



Beige



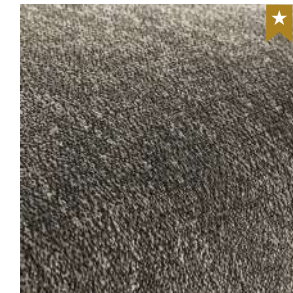
Truffle



Cappuccino



Seapearl



Ash

TEXTURED WEAVE

INDOOR FABRICS

Avalon

C2

CATEGORY

Composition: 32% CO + 3% VI + 7% LI + 58% PES

Weight: 728 gr/lm

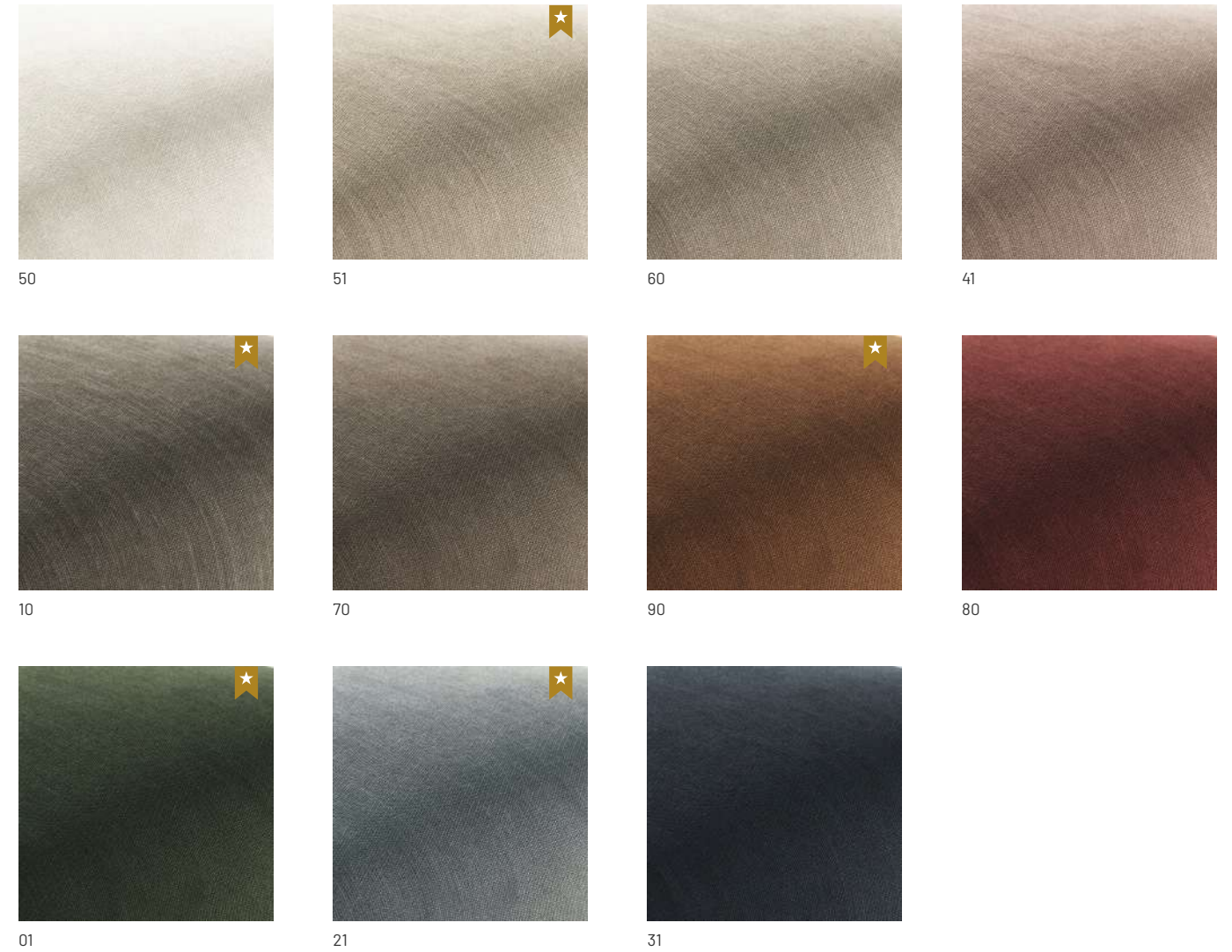
Martindale: >35.000

Care Instructions: 

Fabric Features:



FIRE RESISTANT
BS 5852-1
EN 1021-1
CA TB 117:2013



TEXTURED WEAVE

INDOOR FABRICS

Arno

C2

CATEGORY

Composition: 70% PES + 30% PAN

Weight: 812 gr/lm

Martindale: 100.000

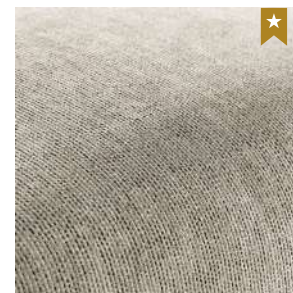
Care Instructions:

*iron inside out

Fabric Features:



FIRE RESISTANT
BS 5852:1979



Cream

TEXTURED WEAVE

INDOOR FABRICS

Astoria

C2

CATEGORY

Composition: 28% VI + 9% LI + 40% CO + 23% PES

Weight: 1000 gr/lm

Martindale: >15.000

Care Instructions:

Fabric Features:

 **FIRE RESISTANT**
 BS 5852-1
 EN 1021-1
 CA TB 117:2013

 **PET PROOF**



Cement



Sand



Taupe



Olive



Denim



Mouse



Moka

TEXTURED WEAVE

INDOOR FABRICS

Galway

C1

CATEGORY

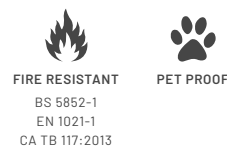
Composition: 100% PES

Weight: 504 gr/lm

Martindale: >65.000

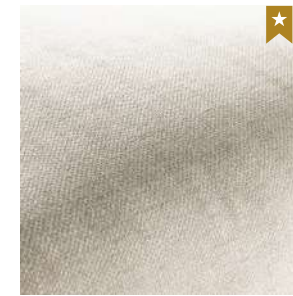
Care Instructions:

Fabric Features:

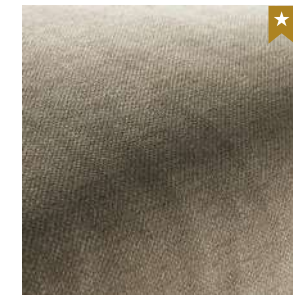




02



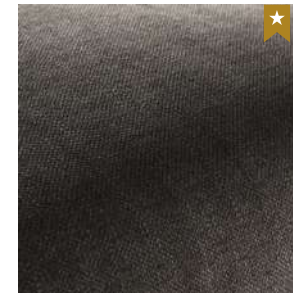
05



10



11



53

TEXTURED WEAVE

INDOOR FABRICS

Helmand



RECYCLED



CATEGORY

Composition: 60% PP + 23% PES + 13% REC PES + 4% REC CO

Weight: 680 gr/lm

Martindale: 46.000

Care Instructions:

Fabric Features:



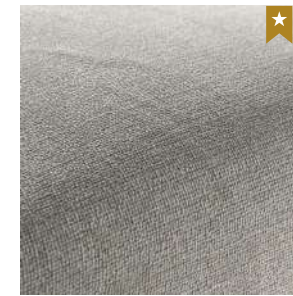
FIRE RESISTANT
BS 5852-0
EN 1021-1:2006
CA TB 117:2013



EASY CLEAN



Ice



Shark



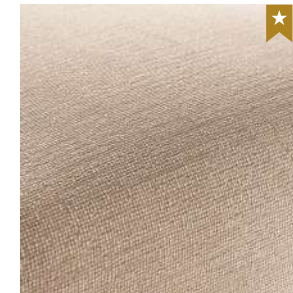
Sand



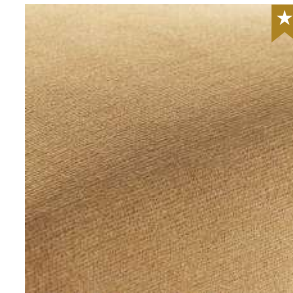
Champagne



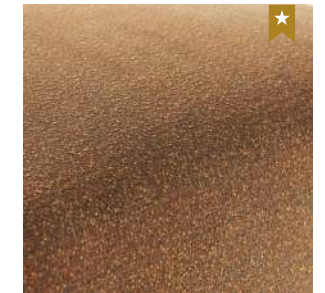
Toffee



Old Rose



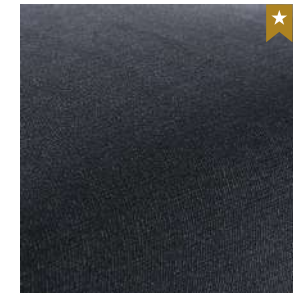
Honey



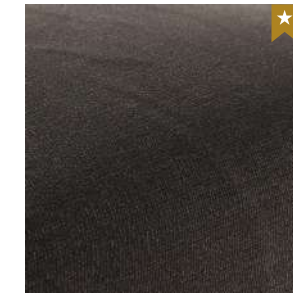
Brick



Safira



Midnight



Black

TEXTURED WEAVE

INDOOR FABRICS

Provence

C3

CATEGORY

Composition: 42% CO + 26% PL + 32% PC

Weight: 1008 gr/lm

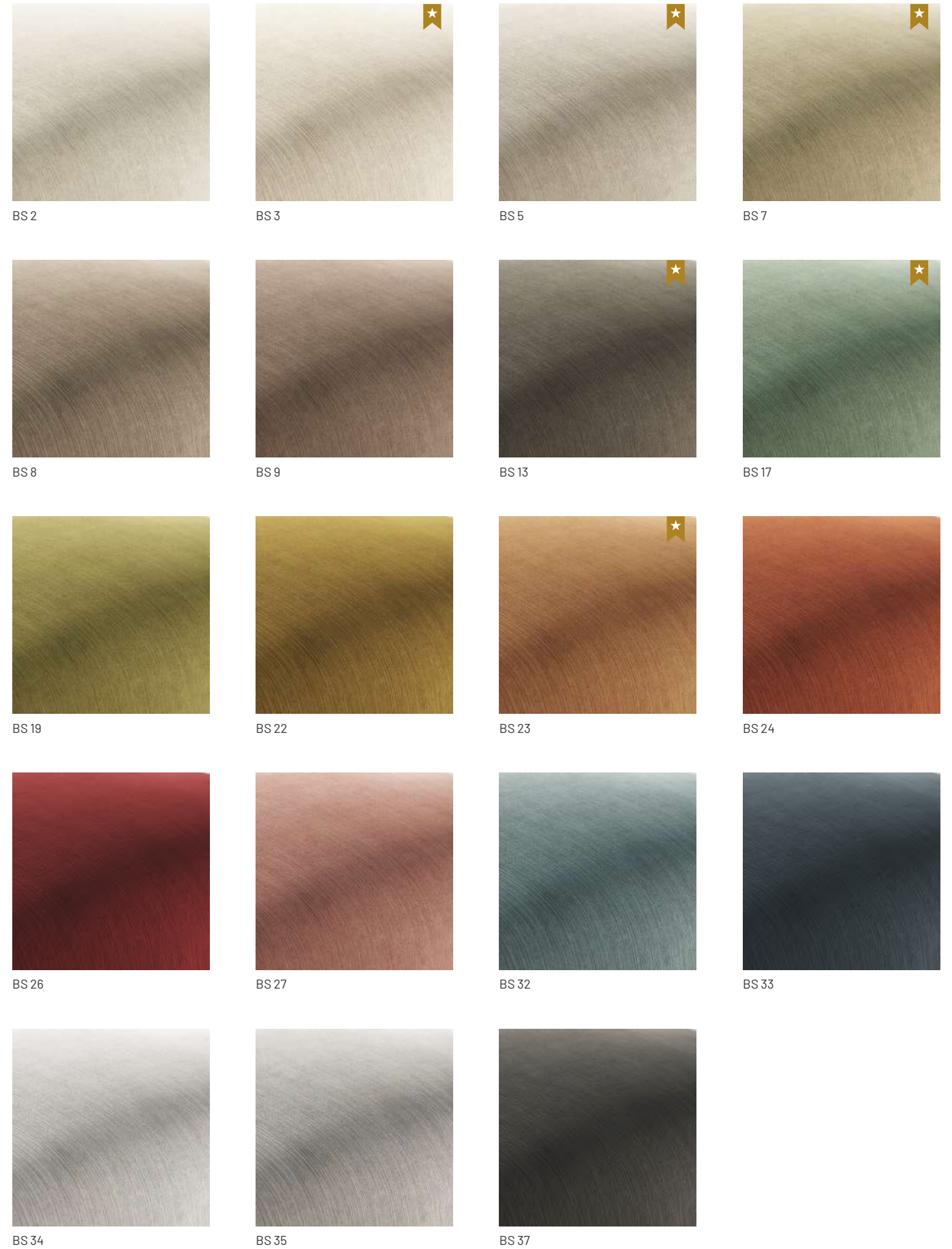
Martindale: 45.000

Care Instructions:

Fabric Features:



FIRE RESISTANT
BS 5852-1
EN 1021-1
CA TB 117:2013



VELVET

INDOOR FABRICS

Clarence



RECYCLED



CATEGORY

Composition: 65% PES + 35% REC CO

Weight: 504 gr/lm

Martindale: 60.000

Care Instructions:

Fabric Features:



FIRE RESISTANT
BS 5852-0



Nata



Pearl



Pink



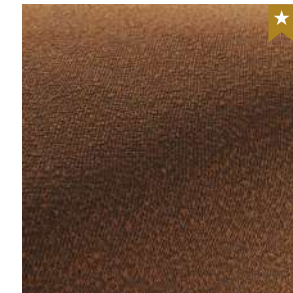
Toffee



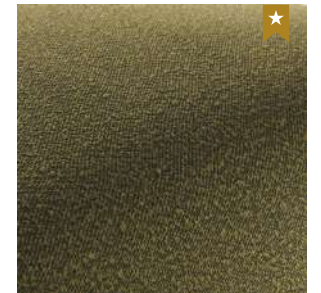
Champagne



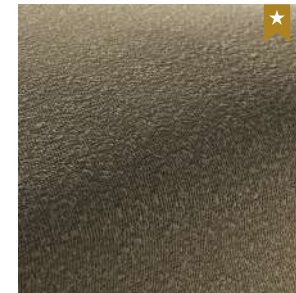
Mostaza



Brick



Olive Green



Mouse



Graphite



Atlantic

BOUCLÉ

INDOOR FABRICS

Columbia

C2

CATEGORY

Composition: 100% PES

Weight: 855 gr/lm

Martindale: 80.000

Care Instructions:

Fabric Features:



FIRE RESISTANT
BS 5852-1
EN 1021-1
CA TB 117:2013



Pearl



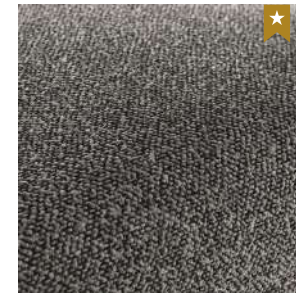
Sand



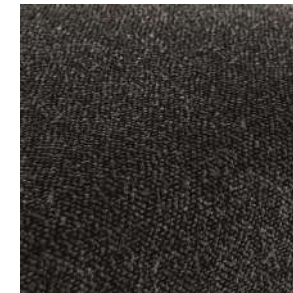
Silver



Taupe



Graphite



Charcoal

BOUCLÉ

INDOOR FABRICS

Devon

C2

CATEGORY

Composition: 96% PES + 4% PC

Weight: 685 gr/lm

Martindale: >70.000

Care Instructions:

Fabric Features:



FIRE RESISTANT
BS 5852-1
EN 1021-1
CA TB 117:2013



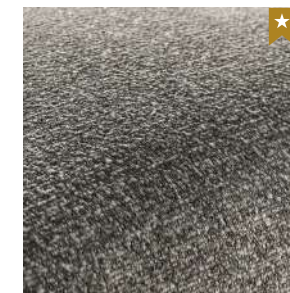
Pearl



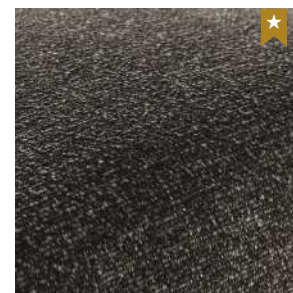
Silver



Ash



Graphite



Anthracite

BOUCLÉ

INDOOR FABRICS

Osaka

C1

CATEGORY

Composition: 100% PES

Weight: 610 gr/lm

Martindale: >65.000

Care Instructions:

Fabric Features:





Pearl



Sand



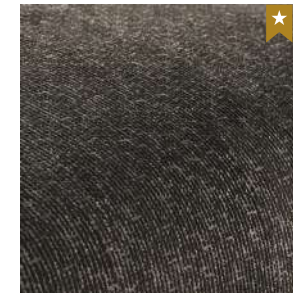
Toffee



Sage



Silver



Graphite

TEXTURED WEAVE

INDOOR FABRICS

Bergen

C2

CATEGORY

Composition: 92% PES + 8% PC

Weight: 1050 gr/lm

Martindale: >70.000

Care Instructions:

Fabric Features:





Greige



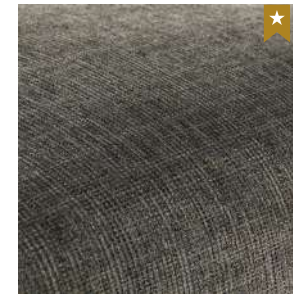
Fog



Khaki



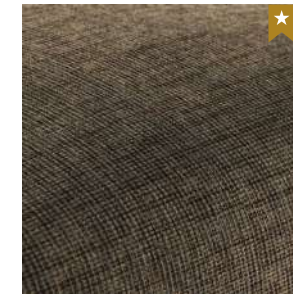
Toffee



Elephant



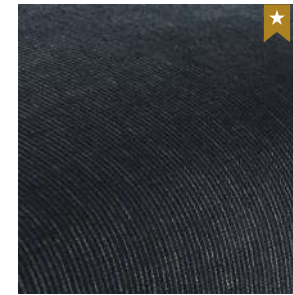
Moss



Woody



Mouse



Ocean

TEXTURED WEAVE

INDOOR FABRICS

Brampton

C1

CATEGORY

Composition: 100% PES

Weight: 420 gr/lm

Martindale: >30.000

Care Instructions:

Fabric Features:





Cement



Sand



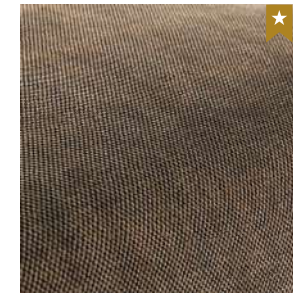
Beige



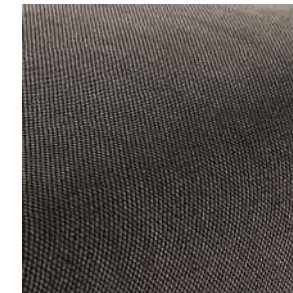
Ash



Stone



Cappuccino



Fog

TEXTURED WEAVE

INDOOR FABRICS

Hudson

C2

CATEGORY

Composition: 56% CO + 4% LI + 12% PES + 28%PC

Weight: 713 gr/lm

Martindale: 40.000

Care Instructions:

Fabric Features:

FIRE RESISTANT
BS 5852-1
EN 1021-1
CA TB 117:2013

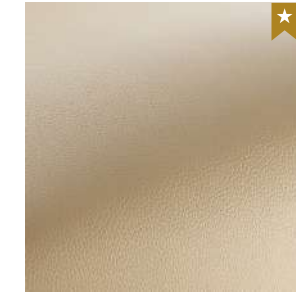
PET PROOF



Silver



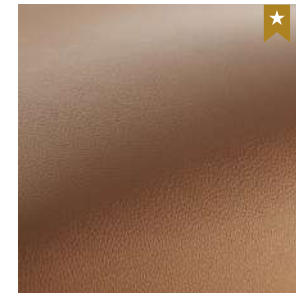
Toffee



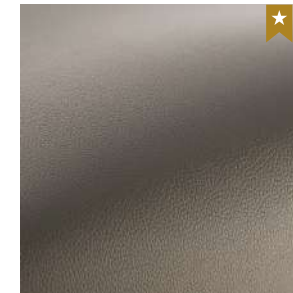
Almond



Terra



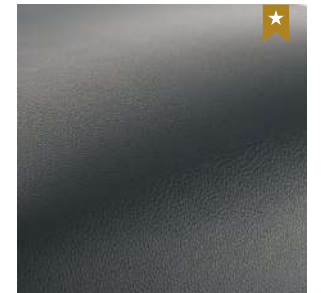
Camel



Elephant



Ash



Ocean



Black

SYNTHETIC LEATHER

INDOOR SYNTHETIC LEATHERS

Rupert

C2

CATEGORY

Composition: 100% PU

Weight: 868 gr/lm

Martindale: >250.000

Care Instructions:

Fabric Features:



FIRE RESISTANT
BS 5852-1
EN 1021-1/2
CA TB 117:2013



SCRATCH
RESISTANT

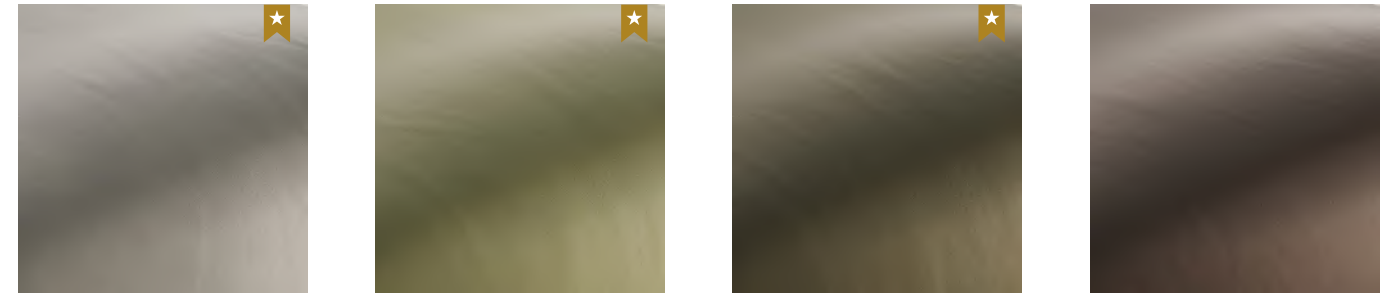


Seaparl

Sand

Toffee

Umber

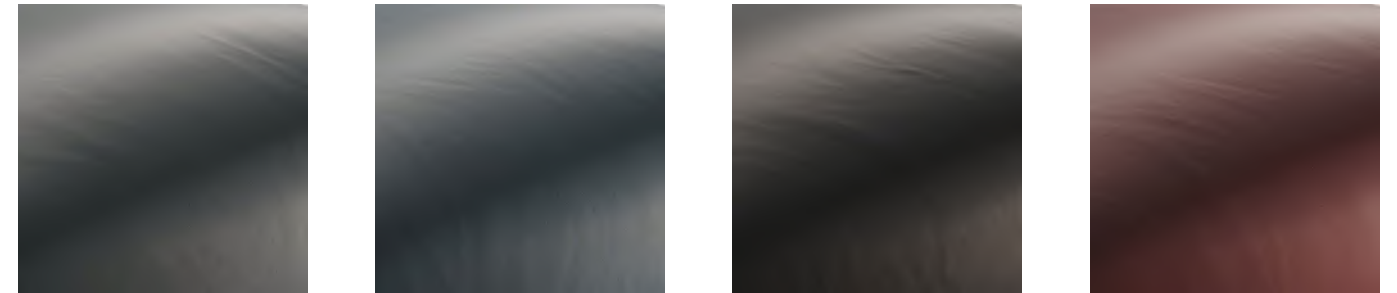


Zinc

Moss

Bosco

Caribou

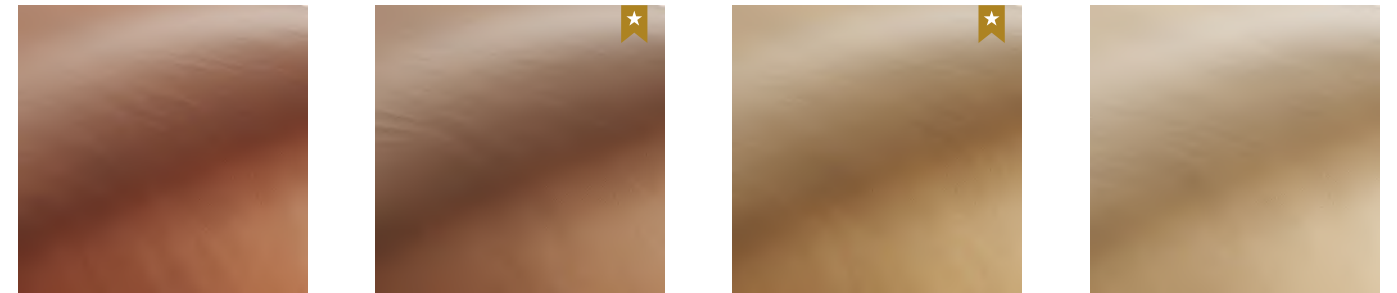


Gull

Graphite

Black

Wine



Masai

Cognac

Camel

Lion



Yam

NATURAL LEATHER

INDOOR NATURAL LEATHERS

Dover



ORIGIN

CATEGORY

Colour fastness to rubbing: 500 cycles (dry)

Flexing Resistance: 50.000 (dry)

Care Instructions:

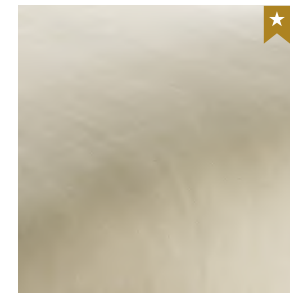
Avoid direct sunlight.

Use a neutral soap solution for cleaning.

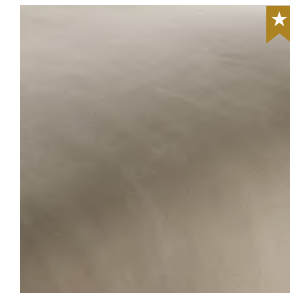
Leather Features:



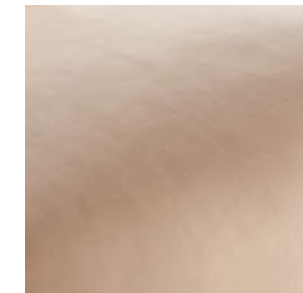
FIRE RESISTANT
BS 5852:1979
BS EN 1021-1/2:2006
CA TB 117:2013-1



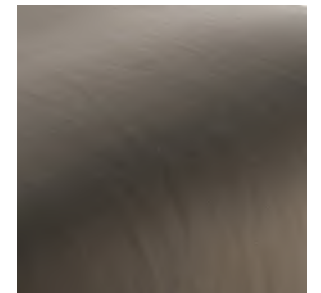
Toffee



Antilop



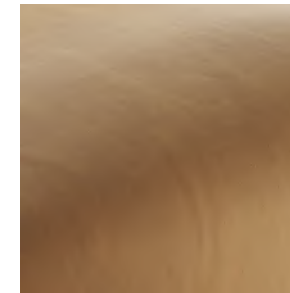
Nude



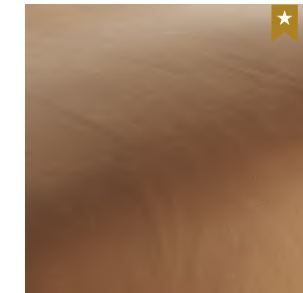
Chestnut



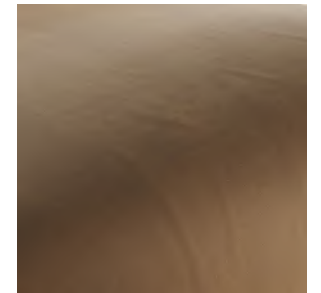
Mostaza



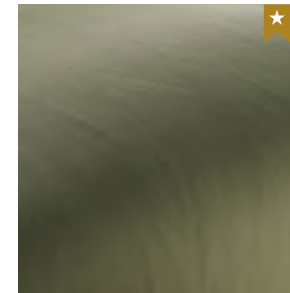
Camel



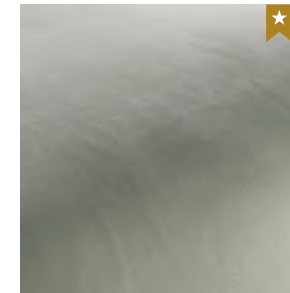
Cuio



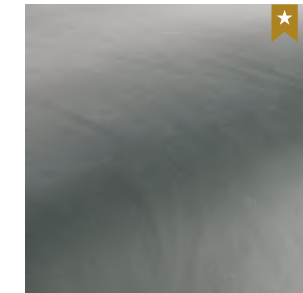
Truffle



Forest



Mouse



Shark

NATURAL LEATHER

INDOOR NATURAL LEATHERS

Aspen



ORIGIN

CATEGORY

Colour fastness to rubbing: 50 cycles (dry)

Flexing Resistance: 50.000 (dry)

Care Instructions:

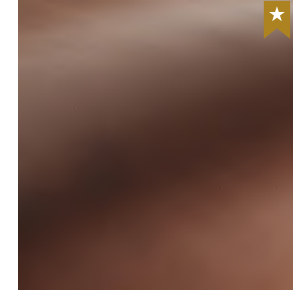
Avoid direct sunlight.

Use a neutral soap solution for cleaning.

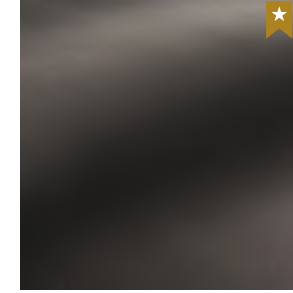
Leather Features:



FIRE RESISTANT
BS 5852:1979
BS EN 1021-1/2:2006



Terra



Black

SADDLE LEATHER

INDOOR NATURAL LEATHERS

Albany

EU

ORIGIN

Care Instructions:

Do not cover with plastic.

Avoid direct sunlight.

Avoid contact with beauty products (perfumes, creams, etc),

as these are likely to cause spots or other undesirable effects on the leather.



Leather Mark 01



Leather Mark 02



Leather Mark 03



Leather Mark 04



Leather Mark 05

INDOOR NATURAL LEATHERS

Leather Marks

Care Instructions:

Some unique markings and grain difference may appear, due to the natural origin of our leathers.
These marks are part of the animal's lifetime and should not be considered as defects.



Sand



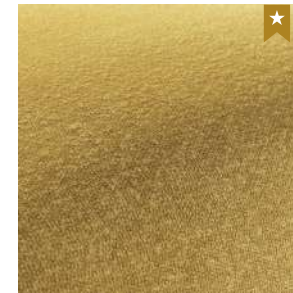
Taupe



Khaki



Mouse



Mostaza



Avocat



Ocean

TEXTURED WEAVE

OUTDOOR FABRICS

Scalea



RECYCLED



CATEGORY

Composition: 93% REC YARN + 7% PES

Weight: 697 gr/lm

Martindale: 40.000

Care Instructions:

Fabric Features:



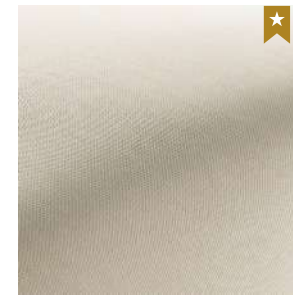
FIRE RESISTANT
BS 5852-1
EN 1021-1
CA TB 117:2013



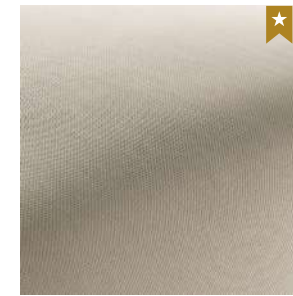
COLD CRACKING
RESISTANT



PET PROOF



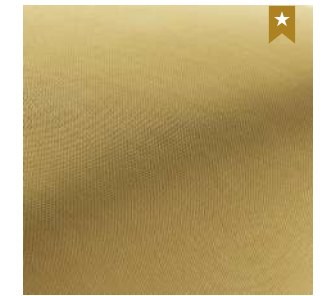
Sand



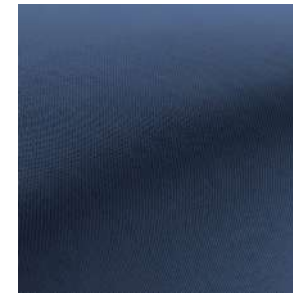
Toffee



Taupe



Mostaza



Ocean

TEXTURED WEAVE

OUTDOOR FABRICS

Tropea



RECYCLED



CATEGORY

Composition: 100% REC YARN

Weight: 395 gr/lm

Martindale: 40.000

Care Instructions:

Fabric Features:



FIRE RESISTANT
BS 5852-1
EN 1021-1
CA TB 117:2013



COLD CRACKING
RESISTANT



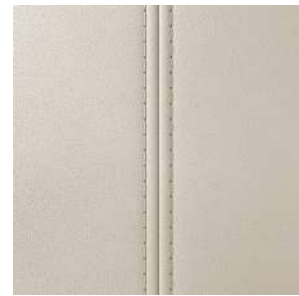
PET PROOF



Invisible Stitching



Top Stitching



Double Top Stitching



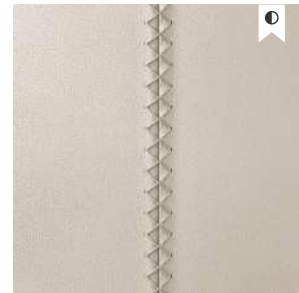
Piping



Spaced Double Top Stching



Double Top Stching with Piping



Cross Stitching



Blanket Stitching



Zig Zag Stitching



Half Zig Zag Stitching



1227



3525



0414



1209



2815



0269



3545



1224



8324



1488



0788



0821



4000

STITCH

STITCH TYPES

Stitches

Care Instructions:

The stitches designated by the following symbol "★" may be used with a contrasting thread color; if not specified, they will be executed with a thread color matching that of the base fabric.

The remaining stitches will be manufactured with a thread color matching the base fabric.

THREADS

THREAD COLORS

Thread Colors



Cream 2303



Hazelnut 2337



Charcoal 2325

OUTDOOR CORDS

OUTDOOR CORD COLORS

Cords

Features:
5mm diameter.



METALS

Metals

Features:

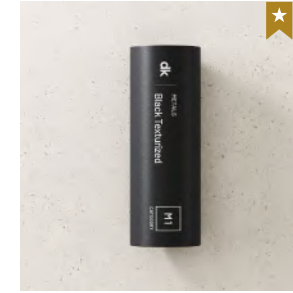
The base material for M1 metals is steel. However, in the case of its application in an Outdoor Collection piece, the base material will be stainless steel.
 The base material for M2 metals is stainless steel.

M1

CATEGORY



White Texturized



Black Texturized



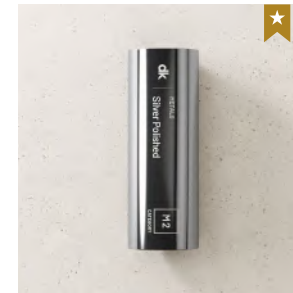
Ivory Texturized



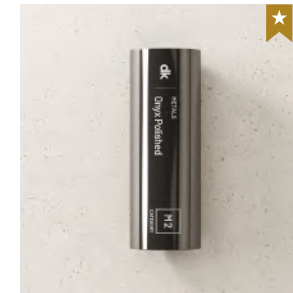
Greige Texturized

M2

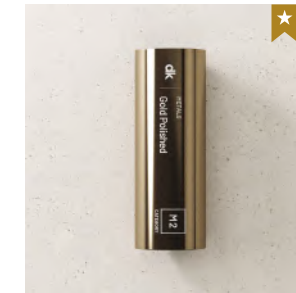
CATEGORY



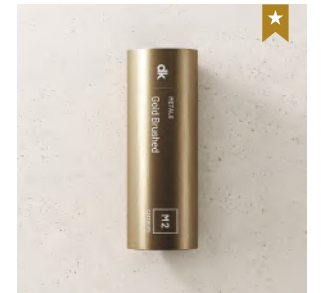
Silver Polished



Onyx Polished



Gold Polished



Gold Brushed



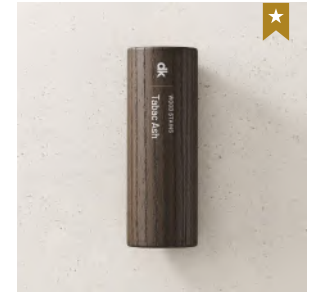
Sand Ash



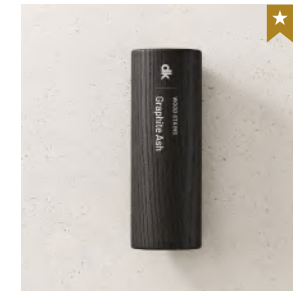
Stone Ash



Mocha Ash



Tabac Ash



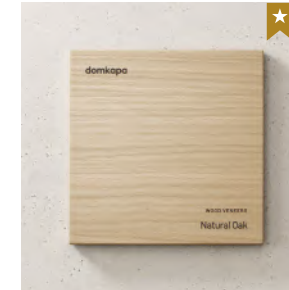
Graphite Ash

WOOD STAINS

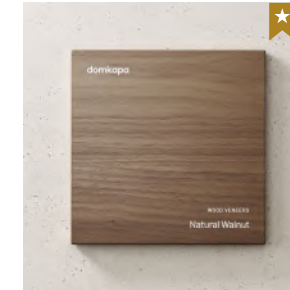
Wood Stains

Features:

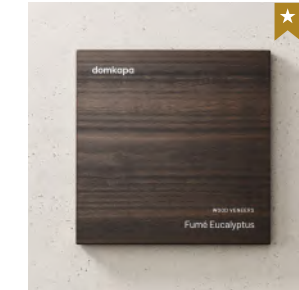
- Natural touch and feel.
- Good resistance to friction and scratches.
- Good protection against natural yellowing by UV rays.
- Only suited for indoor use.



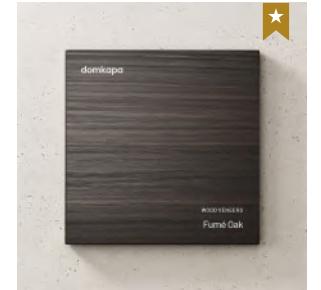
Natural Oak



Natural Walnut



Fumé Eucalyptus



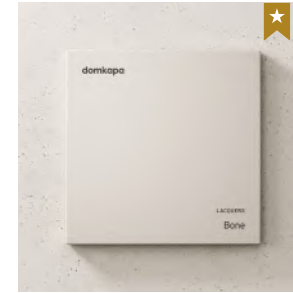
Fumé Oak

WOOD VENEERS

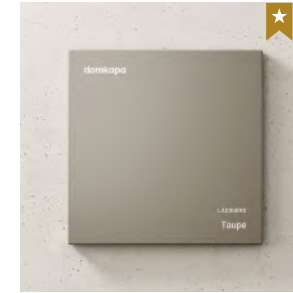
Wood Veneers

Features:

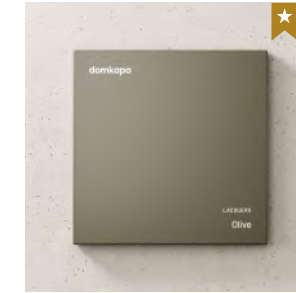
- Natural touch and feel.
- Good resistance to friction and scratches.
- Good protection against natural yellowing by UV rays.
- Only suited for indoor use.



Bone



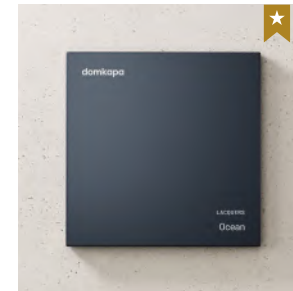
Taupe



Olive



Syrah



Ocean



Black

LACQUERS

Lacquers

Features:

- Natural touch and feel.
- Good resistance to friction and scratches.
- Good protection against natural yellowing by UV rays.
- Only suited for indoor use.

More color options, such as NCS, RAL or PANTONE are available under request.